

LOT NUMBER	LOT AREA (SQ. FT.)	CALCULATED MAX. BUILDING INC. GARAGE (SQ. FT. OF LOT AREA)	MINIMUM OPEN SPACE (50% OF HEATED AREA) (FIRST FLOOR ONLY)	OPEN SPACE (SQ. FT.)
1	6,450	2,618	1,827	1,827
2	6,450	2,618	1,827	1,827
3	6,450	2,618	1,827	1,827
4	6,450	2,618	1,827	1,827
5	6,450	2,618	1,827	1,827
6	6,450	2,618	1,827	1,827
7	6,450	2,618	1,827	1,827
8	6,450	2,618	1,827	1,827
9	6,450	2,618	1,827	1,827
10	6,450	2,618	1,827	1,827
11	6,450	2,618	1,827	1,827
12	6,450	2,618	1,827	1,827
13	6,450	2,618	1,827	1,827
14	6,450	2,618	1,827	1,827
15	6,450	2,618	1,827	1,827
16	6,450	2,618	1,827	1,827
17	6,450	2,618	1,827	1,827
18	6,450	2,618	1,827	1,827
19	6,450	2,618	1,827	1,827
20	6,450	2,618	1,827	1,827
21	6,450	2,618	1,827	1,827
22	6,450	2,618	1,827	1,827
23	6,450	2,618	1,827	1,827
24	6,450	2,618	1,827	1,827
25	6,450	2,618	1,827	1,827
26	6,450	2,618	1,827	1,827
27	6,450	2,618	1,827	1,827
28	6,450	2,618	1,827	1,827
29	6,450	2,618	1,827	1,827
30	6,450	2,618	1,827	1,827
31	6,450	2,618	1,827	1,827
32	6,450	2,618	1,827	1,827
33	6,450	2,618	1,827	1,827
34	6,450	2,618	1,827	1,827
35	6,450	2,618	1,827	1,827
36	6,450	2,618	1,827	1,827
37	6,450	2,618	1,827	1,827
38	6,450	2,618	1,827	1,827
39	6,450	2,618	1,827	1,827
40	6,450	2,618	1,827	1,827
41	6,450	2,618	1,827	1,827
42	6,450	2,618	1,827	1,827
43	6,450	2,618	1,827	1,827
44	6,450	2,618	1,827	1,827
45	6,450	2,618	1,827	1,827

- NOTES**
- TOTAL OF 65 HOMES PROPOSED
 - ALL LOTS ARE GREATER THAN 4,000 SQ. FT. IN SIZE AND INVOLVE A MIX OF SINGLE-FAMILY DETACHED HOMES AND ZERO LOT LINE HOMES. A MIX OF SINGLE-FAMILY DETACHED HOMES AND ZERO LOT LINE HOMES IS REQUIRED TO ACCOMMODATE TWO STORY HOMES AND HAD BEEN IDENTIFIED IN THE DEVELOPMENT PLAN. ALL APPLICABLE SETBACKS WILL BE MET.
 - THE SITE PLAN INDICATES A STANDARD (MAXIMUM) FOOTPRINT FOR EACH LOT, WHICH WILL ACCOMMODATE A NUMBER OF ALTERNATE FLOOR PLANS. THE DEVELOPER SHALL SUBMIT AN ALTERNATE FLOOR PLAN WITHIN THE FOOTPRINT INDICATED ON THE SITE PLAN. THE ALTERNATE FLOOR PLAN SHALL BE DESIGNED AND PHYSICALLY ORIENTED ON EACH LOT TO ADD MAXIMUM OPEN SPACE TO THE DEVELOPMENT PLAN. THE MAXIMUM AMOUNT OF OPEN SPACE MAY NOT BE EXCEEDED AND THE MINIMUM AMOUNT OF OPEN SPACE MUST BE PROVIDED.
 - THE SITE WILL PROVIDE FOR SIDEWALKS ON BOTH SIDES OF THE ROAD AND SIDEWALKS BETWEEN THE EASTERN AND WESTERN PORTIONS OF THE SUBDIVISION.
 - EACH HOME WILL HAVE EITHER A TWO-CAR GARAGE OR CARPORT. ADDITIONAL GUEST TO PARKING SPACES IN FRONT OF THE GARAGE. SOME ADDITIONAL GUEST TO PARKING SPACES WILL BE PROVIDED AS PARALLEL PARKING ALONG THE PROPOSED ROAD.
 - THE SITE PLAN CONFORMS TO ALL SETBACKS AND OPEN SPACE REQUIREMENTS AS STIPULATED BY CITY CODE (SEE CHART PROVIDING LOT SIZES, MINIMUM COVERAGE AND MINIMUM OPEN SPACE PROVIDED FOR EACH LOT).
 - TWO STORY BUILDINGS ARE PERMITTED ON LOTS #4, #14, #24, #34, #44, #54, #64, #74, #84, #94, #104, #114, #124, #134, #144, #154, #164, #174, #184, #194, #204, #214, #224, #234, #244, #254, #264, #274, #284, #294, #304, #314, #324, #334, #344, #354, #364, #374, #384, #394, #404, #414, #424, #434, #444, #454, #464, #474, #484, #494, #504, #514, #524, #534, #544, #554, #564, #574, #584, #594, #604, #614, #624, #634, #644, #654, #664, #674, #684, #694, #704, #714, #724, #734, #744, #754, #764, #774, #784, #794, #804, #814, #824, #834, #844, #854, #864, #874, #884, #894, #904, #914, #924, #934, #944, #954, #964, #974, #984, #994, #1004, #1014, #1024, #1034, #1044, #1054, #1064, #1074, #1084, #1094, #1104, #1114, #1124, #1134, #1144, #1154, #1164, #1174, #1184, #1194, #1204, #1214, #1224, #1234, #1244, #1254, #1264, #1274, #1284, #1294, #1304, #1314, #1324, #1334, #1344, #1354, #1364, #1374, #1384, #1394, #1404, #1414, #1424, #1434, #1444, #1454, #1464, #1474, #1484, #1494, #1504, #1514, #1524, #1534, #1544, #1554, #1564, #1574, #1584, #1594, #1604, #1614, #1624, #1634, #1644, #1654, #1664, #1674, #1684, #1694, #1704, #1714, #1724, #1734, #1744, #1754, #1764, #1774, #1784, #1794, #1804, #1814, #1824, #1834, #1844, #1854, #1864, #1874, #1884, #1894, #1904, #1914, #1924, #1934, #1944, #1954, #1964, #1974, #1984, #1994, #2004, #2014, #2024, #2034, #2044, #2054, #2064, #2074, #2084, #2094, #2104, #2114, #2124, #2134, #2144, #2154, #2164, #2174, #2184, #2194, #2204, #2214, #2224, #2234, #2244, #2254, #2264, #2274, #2284, #2294, #2304, #2314, #2324, #2334, #2344, #2354, #2364, #2374, #2384, #2394, #2404, #2414, #2424, #2434, #2444, #2454, #2464, #2474, #2484, #2494, #2504, #2514, #2524, #2534, #2544, #2554, #2564, #2574, #2584, #2594, #2604, #2614, #2624, #2634, #2644, #2654, #2664, #2674, #2684, #2694, #2704, #2714, #2724, #2734, #2744, #2754, #2764, #2774, #2784, #2794, #2804, #2814, #2824, #2834, #2844, #2854, #2864, #2874, #2884, #2894, #2904, #2914, #2924, #2934, #2944, #2954, #2964, #2974, #2984, #2994, #3004, #3014, #3024, #3034, #3044, #3054, #3064, #3074, #3084, #3094, #3104, #3114, #3124, #3134, #3144, #3154, #3164, #3174, #3184, #3194, #3204, #3214, #3224, #3234, #3244, #3254, #3264, #3274, #3284, #3294, #3304, #3314, #3324, #3334, #3344, #3354, #3364, #3374, #3384, #3394, #3404, #3414, #3424, #3434, #3444, #3454, #3464, #3474, #3484, #3494, #3504, #3514, #3524, #3534, #3544, #3554, #3564, #3574, #3584, #3594, #3604, #3614, #3624, #3634, #3644, #3654, #3664, #3674, #3684, #3694, #3704, #3714, #3724, #3734, #3744, #3754, #3764, #3774, #3784, #3794, #3804, #3814, #3824, #3834, #3844, #3854, #3864, #3874, #3884, #3894, #3904, #3914, #3924, #3934, #3944, #3954, #3964, #3974, #3984, #3994, #4004, #4014, #4024, #4034, #4044, #4054, #4064, #4074, #4084, #4094, #4104, #4114, #4124, #4134, #4144, #4154, #4164, #4174, #4184, #4194, #4204, #4214, #4224, #4234, #4244, #4254, #4264, #4274, #4284, #4294, #4304, #4314, #4324, #4334, #4344, #4354, #4364, #4374, #4384, #4394, #4404, #4414, #4424, #4434, #4444, #4454, #4464, #4474, #4484, #4494, #4504, #4514, #4524, #4534, #4544, #4554, #4564, #4574, #4584, #4594, #4604, #4614, #4624, #4634, #4644, #4654, #4664, #4674, #4684, #4694, #4704, #4714, #4724, #4734, #4744, #4754, #4764, #4774, #4784, #4794, #4804, #4814, #4824, #4834, #4844, #4854, #4864, #4874, #4884, #4894, #4904, #4914, #4924, #4934, #4944, #4954, #4964, #4974, #4984, #4994, #5004, #5014, #5024, #5034, #5044, #5054, #5064, #5074, #5084, #5094, #5104, #5114, #5124, #5134, #5144, #5154, #5164, #5174, #5184, #5194, #5204, #5214, #5224, #5234, #5244, #5254, #5264, #5274, #5284, #5294, #5304, #5314, #5324, #5334, #5344, #5354, #5364, #5374, #5384, #5394, #5404, #5414, #5424, #5434, #5444, #5454, #5464, #5474, #5484, #5494, #5504, #5514, #5524, #5534, #5544, #5554, #5564, #5574, #5584, #5594, #5604, #5614, #5624, #5634, #5644, #5654, #5664, #5674, #5684, #5694, #5704, #5714, #5724, #5734, #5744, #5754, #5764, #5774, #5784, #5794, #5804, #5814, #5824, #5834, #5844, #5854, #5864, #5874, #5884, #5894, #5904, #5914, #5924, #5934, #5944, #5954, #5964, #5974, #5984, #5994, #6004, #6014, #6024, #6034, #6044, #6054, #6064, #6074, #6084, #6094, #6104, #6114, #6124, #6134, #6144, #6154, #6164, #6174, #6184, #6194, #6204, #6214, #6224, #6234, #6244, #6254, #6264, #6274, #6284, #6294, #6304, #6314, #6324, #6334, #6344, #6354, #6364, #6374, #6384, #6394, #6404, #6414, #6424, #6434, #6444, #6454, #6464, #6474, #6484, #6494, #6504, #6514, #6524, #6534, #6544, #6554, #6564, #6574, #6584, #6594, #6604, #6614, #6624, #6634, #6644, #6654, #6664, #6674, #6684, #6694, #6704, #6714, #6724, #6734, #6744, #6754, #6764, #6774, #6784, #6794, #6804, #6814, #6824, #6834, #6844, #6854, #6864, #6874, #6884, #6894, #6904, #6914, #6924, #6934, #6944, #6954, #6964, #6974, #6984, #6994, #7004, #7014, #7024, #7034, #7044, #7054, #7064, #7074, #7084, #7094, #7104, #7114, #7124, #7134, #7144, #7154, #7164, #7174, #7184, #7194, #7204, #7214, #7224, #7234, #7244, #7254, #7264, #7274, #7284, #7294, #7304, #7314, #7324, #7334, #7344, #7354, #7364, #7374, #7384, #7394, #7404, #7414, #7424, #7434, #7444, #7454, #7464, #7474, #7484, #7494, #7504, #7514, #7524, #7534, #7544, #7554, #7564, #7574, #7584, #7594, #7604, #7614, #7624, #7634, #7644, #7654, #7664, #7674, #7684, #7694, #7704, #7714, #7724, #7734, #7744, #7754, #7764, #7774, #7784, #7794, #7804, #7814, #7824, #7834, #7844, #7854, #7864, #7874, #7884, #7894, #7904, #7914, #7924, #7934, #7944, #7954, #7964, #7974, #7984, #7994, #8004, #8014, #8024, #8034, #8044, #8054, #8064, #8074, #8084, #8094, #8104, #8114, #8124, #8134, #8144, #8154, #8164, #8174, #8184, #8194, #8204, #8214, #8224, #8234, #8244, #8254, #8264, #8274, #8284, #8294, #8304, #8314, #8324, #8334, #8344, #8354, #8364, #8374, #8384, #8394, #8404, #8414, #8424, #8434, #8444, #8454, #8464, #8474, #8484, #8494, #8504, #8514, #8524, #8534, #8544, #8554, #8564, #8574, #8584, #8594, #8604, #8614, #8624, #8634, #8644, #8654, #8664, #8674, #8684, #8694, #8704, #8714, #8724, #8734, #8744, #8754, #8764, #8774, #8784, #8794, #8804, #8814, #8824, #8834, #8844, #8854, #8864, #8874, #8884, #8894, #8904, #8914, #8924, #8934, #8944, #8954, #8964, #8974, #8984, #8994, #9004, #9014, #9024, #9034, #9044, #9054, #9064, #9074, #9084, #9094, #9104, #9114, #9124, #9134, #9144, #9154, #9164, #9174, #9184, #9194, #9204, #9214, #9224, #9234, #9244, #9254, #9264, #9274, #9284, #9294, #9304, #9314, #9324, #9334, #9344, #9354, #9364, #9374, #9384, #9394, #9404, #9414, #9424, #9434, #9444, #9454, #9464, #9474, #9484, #9494, #9504, #9514, #9524, #9534, #9544, #9554, #9564, #9574, #9584, #9594, #9604, #9614, #9624, #9634, #9644, #9654, #9664, #9674, #9684, #9694, #9704, #9714, #9724, #9734, #9744, #9754, #9764, #9774, #9784, #9794, #9804, #9814, #9824, #9834, #9844, #9854, #9864, #9874, #9884, #9894, #9904, #9914, #9924, #9934, #9944, #9954, #9964, #9974, #9984, #9994, #10004, #10014, #10024, #10034, #10044, #10054, #10064, #10074, #10084, #10094, #10104, #10114, #10124, #10134, #10144, #10154, #10164, #10174, #10184, #10194, #10204, #10214, #10224, #10234, #10244, #10254, #10264, #10274, #10284, #10294, #10304, #10314, #10324, #10334, #10344, #10354, #10364, #10374, #10384, #10394, #10404, #10414, #10424, #10434, #10444, #10454, #10464, #10474, #10484, #10494, #10504, #10514, #10524, #10534, #10544, #10554, #10564, #10574, #10584, #10594, #10604, #10614, #10624, #10634, #10644, #10654, #10664, #10674, #10684, #10694, #10704, #10714, #10724, #10734, #10744, #10754, #10764, #10774, #10784, #10794, #10804, #10814, #10824, #10834, #10844, #10854, #10864, #10874, #10884, #10894, #10904, #10914, #10924, #10934, #10944, #10954, #10964, #10974, #10984, #10994, #11004, #11014, #11024, #11034, #11044, #11054, #11064, #11074, #11084, #11094, #11104, #11114, #11124, #11134, #11144, #11154, #11164, #11174, #11184, #11194, #11204, #11214, #11224, #11234, #11244, #11254, #11264, #11274, #11284, #11294, #11304, #11314, #11324, #11334, #11344, #11354, #11364, #11374, #11384, #11394, #11404, #11414, #11424, #11434, #11444, #11454, #11464, #11474, #11484, #11494, #11504, #11514, #11524, #11534, #11544, #11554, #11564, #11574, #11584, #11594, #11604, #11614, #11624, #11634, #11644, #11654, #11664, #11674, #11684, #11694, #11704, #11714, #11724, #11734, #11744, #11754, #11764, #11774, #11784, #11794, #11804, #11814, #11824, #11834, #11844, #11854, #11864, #11874, #11884, #11894, #11904, #11914, #11924, #11934, #11944, #11954, #11964, #11974, #11984, #11994, #12004, #12014, #12024, #12034, #12044, #12054, #12064, #12074, #12084, #12094, #12104, #12114, #12124, #12134, #12144, #12154, #12164, #12174, #12184, #12194, #12204, #12214, #12224, #12234, #12244, #12254, #12264, #12274, #12284, #12294, #12304, #12314, #12324, #12334, #12344, #12354, #12364, #12374, #12384, #12394, #12404, #12414, #12424, #12434, #12444, #12454, #12464, #12474, #12484, #12494, #12504, #12514, #12524, #12534, #12544, #12554, #12564, #12574, #12584, #12594, #12604, #12614, #12624, #12634, #12644, #12654, #12664, #12674, #12684, #12694, #12704, #12714, #12724, #12734, #12744, #12754, #12764, #12774, #12784, #12794, #12804, #12814, #12824, #12834, #12844, #12854, #12864, #12874, #12884, #12894, #12904, #12914, #12924, #12934, #12944, #12954, #12964, #12974, #12984, #12994, #13004, #13014, #13024, #13034, #13044, #13054, #13064, #13074, #13084, #13094, #13104, #13114, #13124, #13134, #13144, #13154, #13164, #13174, #13184, #13194, #13204, #13214, #13224, #13234, #13244, #13254, #13264, #13274, #13284, #13294, #13304, #13314, #13324, #13334, #13344, #13354, #13364, #13374, #13384, #13394, #13404, #13414, #13424, #13434, #13444, #13454, #13464, #13474, #13484, #13494, #13504, #13514, #13524, #13534, #13544, #13554, #13564, #13574, #13584, #13594, #13604, #13614, #13624, #13634, #13644, #13654, #13664, #13674, #13684, #13694, #13704, #13714, #13724, #13734, #13744, #13754, #13764, #13774, #13784, #13794, #13804, #13814, #13824, #13834, #13844, #13854, #13864, #13874, #13884, #13894, #13904, #13914, #13924, #13934, #13944, #13954, #13964, #13974, #13984, #13994, #14004, #14014, #14024, #14034, #14044, #14054, #14064, #14074, #14084, #14094, #14104, #14114, #14124, #14134, #14144, #14154, #14164, #14174, #14184, #14194, #14204, #14214, #14224, #14234, #14244, #14254, #14264, #14274, #14284, #14294, #14304, #14314, #14324, #14334, #14344, #14354, #14364, #14374, #14384, #14394, #14404, #14414, #14424, #14434, #14444, #14454, #14464, #14474, #14484, #14494, #14504, #14514, #14524, #14534, #14544, #14554, #14564, #14574, #14584, #14594, #14604, #14614, #14624, #14634, #14644, #14654, #14664, #14674, #14684, #14694, #14704, #14714, #14724, #14734, #14744, #14754, #14764, #14774, #14784, #14794, #14804, #14814, #14824, #14834, #14844, #14854, #14864, #14874, #14884, #14894, #14904, #14914, #14924, #14934, #14944, #14954, #14964, #14974, #14984, #14994, #15004, #15014, #15024, #15034, #15044, #15054, #15064, #15074, #15084, #150

NOTES:
 BEARINGS BASED ON GPS OBSERVATIONS USING TRIMBLE 4800 & 5700 RECEIVERS, RTK MODE, WGS84 GRID LOCAL.

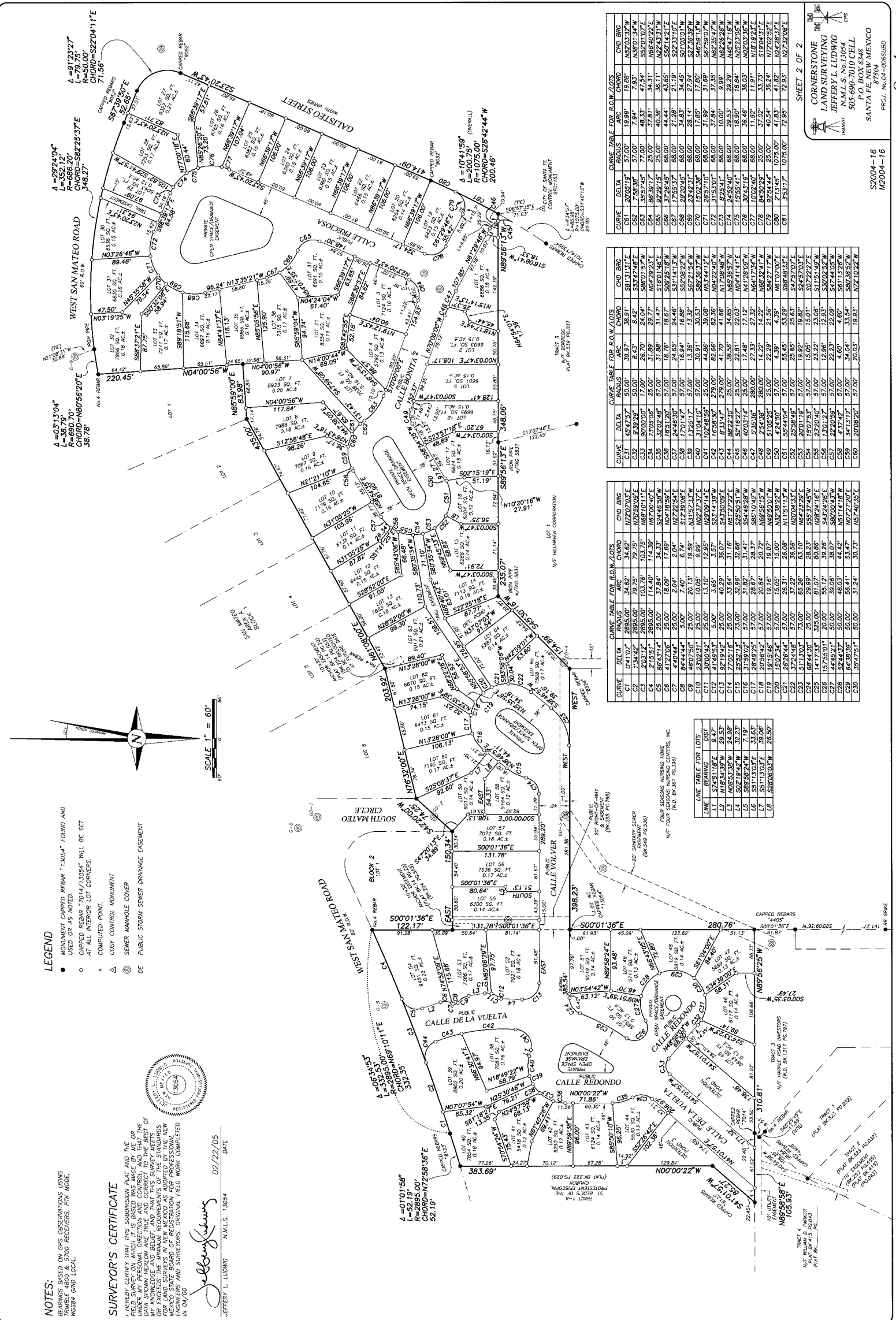
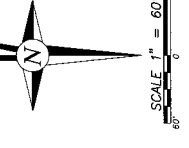
SURVEYOR'S CERTIFICATE

I HEREBY CERTIFY THAT THIS SUBMISSION WAS MADE BY ME OR UNDER MY PERSONAL DIRECTION AND CONTROL, AND THAT THE DATA SHOWN HEREON ARE TRUE AND CORRECT TO THE BEST OF MY KNOWLEDGE AND BELIEF, AND THAT I AM A LICENSED SURVEYOR IN NEW MEXICO AS ADOPTED BY THE NEW MEXICO BOARD OF SURVEYING AND MAPPING ENGINEERS AND SURVEYORS. ORIGINAL FIELD WORK COMPLETED IN 04/20

Jeffery L. Ludwig
 JEFFERY L. LUDWIG N.M.L.S. 13054 DATE 02/22/05



- LEGEND**
- MONUMENT CAPPED REBAR "13054" FOUND AND USED OR AS NOTED.
 - CAPPED REBAR "7014/13054" WILL BE SET AT ALL INTERIOR LOT CORNERS.
 - COMPUTED POINT.
 - ⊙ COSF CONTROL MONUMENT
 - ⊙ SEWER MANHOLE COVER
 - DE PUBLIC STORM SEWER DRAINAGE EASEMENT



CURVE TABLE FOR ROW LOTS

CURVE	DELTA	RADIUS	ARC	CHORD	CHD BRG
C1	74.107°	2895.00'	34.62'	54.62'	N72°07'00"E
C2	173.442°	2895.00'	79.79'	79.79'	N72°07'00"E
C3	103.422°	2895.00'	114.40'	114.40'	N72°07'00"E
C4	37.000°	2895.00'	144.00'	144.00'	N72°07'00"E
C5	86.434°	25.00'	18.00'	18.00'	S24°45'28"W
C6	41.270°	25.00'	2.04'	2.04'	N27°29'54"E
C7	47.024°	5.00'	7.40'	7.40'	S12°39'02"E
C8	46.025°	20.13'	19.39'	19.39'	S12°39'02"E
C9	44.444°	5.00'	6.74'	6.74'	S12°39'02"E
C10	30.000°	5.00'	12.99'	12.99'	N20°00'00"E
C11	41.495°	5.00'	3.65'	3.65'	S24°45'28"W
C12	9.719°	25.00'	40.29'	36.07'	S43°50'09"E
C13	77.021°	25.00'	33.64'	31.16'	N51°22'22"E
C14	29.511°	7.00'	39.96'	37.68'	S24°45'28"W
C15	37.592°	7.00'	31.76'	31.76'	S24°45'28"W
C16	37.592°	7.00'	31.76'	31.76'	S24°45'28"W
C17	85.113°	25.00'	20.84'	20.72'	S24°45'28"W
C18	19.154°	57.00'	19.15'	19.07'	N49°50'11"W
C19	150.734°	57.00'	15.00'	15.00'	N32°39'22"E
C20	26.284°	57.00'	26.31'	26.09'	N15°11'15"W
C21	37.244°	57.00'	37.22'	36.59'	N20°04'33"E
C22	57.130°	25.00'	30.69'	30.69'	N20°04'33"E
C23	57.130°	25.00'	30.69'	30.69'	N20°04'33"E
C24	14.173°	325.00'	61.07'	60.88'	N26°24'16"E
C25	15.250°	20.00'	55.12'	39.28'	S43°24'26"E
C26	44.452°	50.00'	39.06'	36.07'	S60°00'43"W
C27	52.442°	50.00'	46.03'	44.42'	N51°14'15"W
C28	64.363°	50.00'	58.41'	54.47'	N22°22'02"E
C29	35.475°	30.00'	31.24'	30.73'	N57°40'35"E

CURVE TABLE FOR ROW LOTS

CURVE	DELTA	RADIUS	ARC	CHORD	CHD BRG
C31	49.472°	50.00'	39.97'	38.97'	S81°31'11"E
C32	8.430°	50.00'	8.43'	8.43'	S53°27'48"E
C33	20.000°	25.00'	31.89'	29.77'	N16°01'46"E
C34	32.000°	25.00'	31.89'	29.77'	N16°01'46"E
C35	32.000°	25.00'	31.89'	29.77'	N16°01'46"E
C36	1.651°	27.00'	18.76'	18.67'	S09°29'18"W
C37	24.462°	27.00'	24.63'	24.46'	S11°14'15"W
C38	17.014°	27.00'	16.84'	16.86'	S29°29'22"W
C39	17.014°	27.00'	16.84'	16.86'	S29°29'22"W
C40	10.248°	25.00'	44.46'	39.08'	N53°44'12"W
C41	10.248°	25.00'	44.46'	39.08'	N53°44'12"W
C42	16.980°	279.00'	62.86'	62.36'	N04°22'40"W
C43	6.334°	279.00'	41.70'	41.66'	N17°08'48"W
C44	8.822°	25.00'	36.58'	34.85'	N65°35'57"W
C45	57.167°	25.00'	22.81'	22.81'	N04°11'41"E
C46	40.931°	280.00'	27.35'	27.32'	N17°29'50"W
C47	40.931°	280.00'	27.35'	27.32'	N17°29'50"W
C48	51.092°	25.00'	22.29'	21.56'	S84°21'17"W
C49	42.450°	27.00'	4.39'	4.39'	N10°10'00"E
C50	55.449°	57.00'	55.45'	53.59'	S88°48'53"E
C51	26.584°	57.00'	26.58'	25.85'	S47°29'07"E
C52	26.584°	57.00'	26.58'	25.85'	S47°29'07"E
C53	10.119°	57.00'	15.00'	15.00'	S47°29'07"E
C54	23.204°	57.00'	23.22'	23.08'	S11°51'48"W
C55	13.017°	57.00'	12.96'	12.93'	S30°02'52"W
C56	13.017°	57.00'	12.96'	12.93'	S30°02'52"W
C57	22.205°	57.00'	22.23'	22.09'	S47°41'05"W
C58	43.749°	57.00'	46.07'	46.07'	S61°13'26"W
C59	43.749°	57.00'	46.07'	46.07'	S61°13'26"W
C60	20.000°	30.00'	30.00'	30.00'	N72°07'00"E

CURVE TABLE FOR ROW LOTS

CURVE	DELTA	RADIUS	ARC	CHORD	CHD BRG
C61	20.951°	57.00'	19.89'	19.89'	N57°03'32"W
C62	7.983°	57.00'	7.94'	7.93'	N30°01'34"W
C63	66.301°	25.00'	37.81'	36.11'	N65°40'22"E
C64	92.291°	25.00'	40.36'	36.11'	N22°43'31"W
C65	37.265°	68.00'	44.44'	43.65'	S07°14'21"E
C66	37.265°	68.00'	44.44'	43.65'	S07°14'21"E
C67	27.753°	68.00'	21.28'	21.19'	S22°33'10"E
C68	27.753°	68.00'	21.28'	21.19'	S22°33'10"E
C69	24.424°	68.00'	24.43'	24.40'	S07°05'01"W
C70	24.424°	68.00'	24.43'	24.40'	S07°05'01"W
C71	26.521°	68.00'	31.69'	31.69'	S27°39'02"W
C72	13.510°	68.00'	37.84'	37.35'	N82°35'47"W
C73	87.241°	68.00'	10.00'	9.99'	N82°26'26"W
C74	24.924°	68.00'	29.53'	29.29'	N45°47'15"W
C75	15.851°	68.00'	18.90'	18.84'	N29°23'05"W
C76	15.851°	68.00'	18.90'	18.84'	N29°23'05"W
C77	11.931°	68.00'	11.92'	11.91'	N02°03'03"E
C78	84.500°	25.00'	37.02'	33.23'	N18°04'31"E
C79	92.944°	25.00'	40.54'	36.24'	N12°02'52"E
C80	21.345°	1075.00'	71.83'	71.83'	N42°28'37"E
C81	5.931°	1075.00'	72.95'	72.95'	N27°32'08"E

SHEET 2 OF 2
 CORNERSTONE
 LAND SURVEYING
 JEFFERY L. LUDWIG
 N.M.L.S. No. 13054
 505-690-7010 CELL
 SANTA FE, NEW MEXICO
 87504
 PROJ. INC-04-065180

S2004-16
 M2004-16